

Stage Loading Door
Nominal 6' x 10'

32'-0"

32'-0"

30'-0"

64'-0"

15'-0"

Nominal depth of wings both sides

Proscenium Line

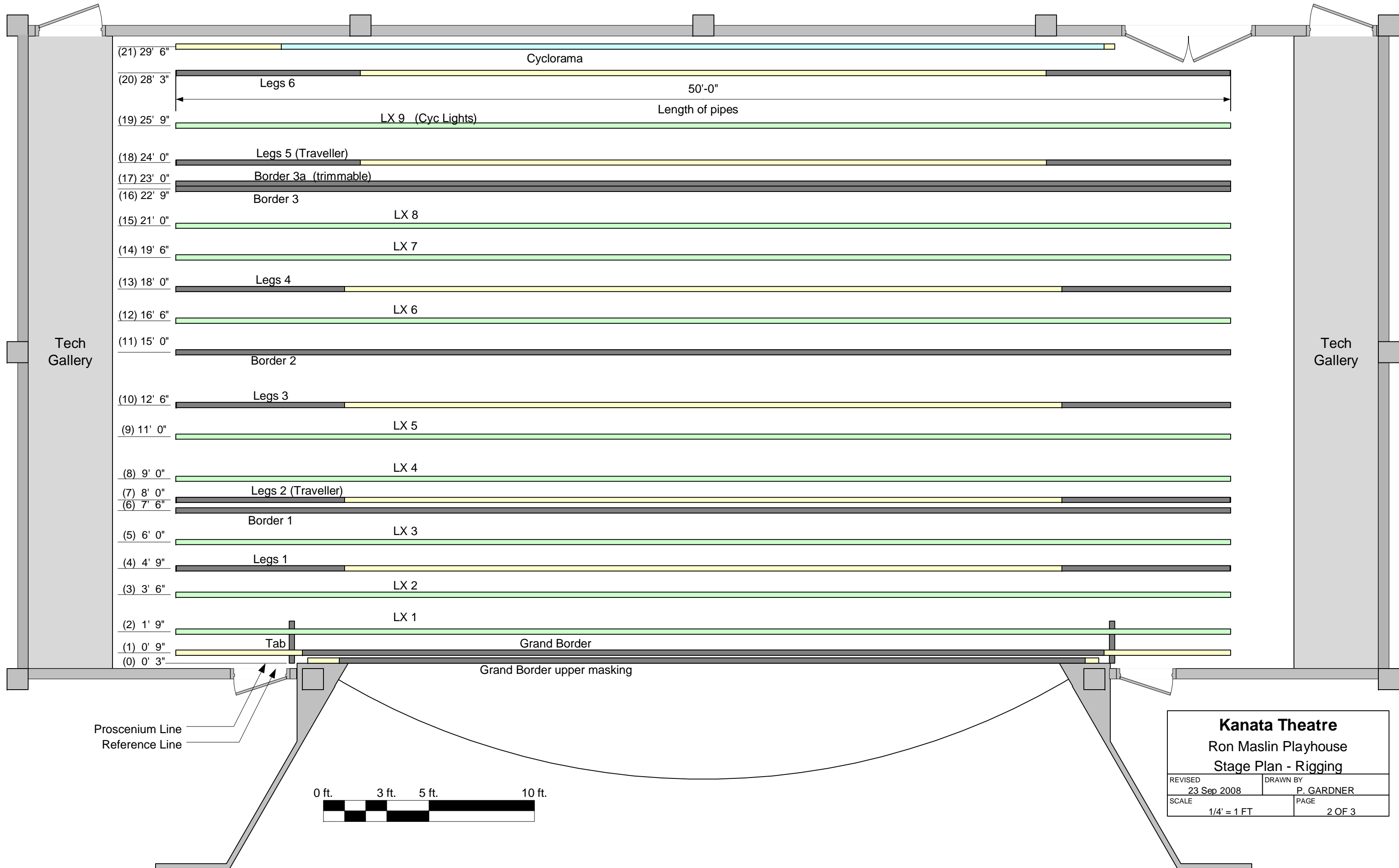
3"

Reference Line
(front wall)

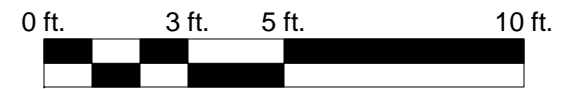
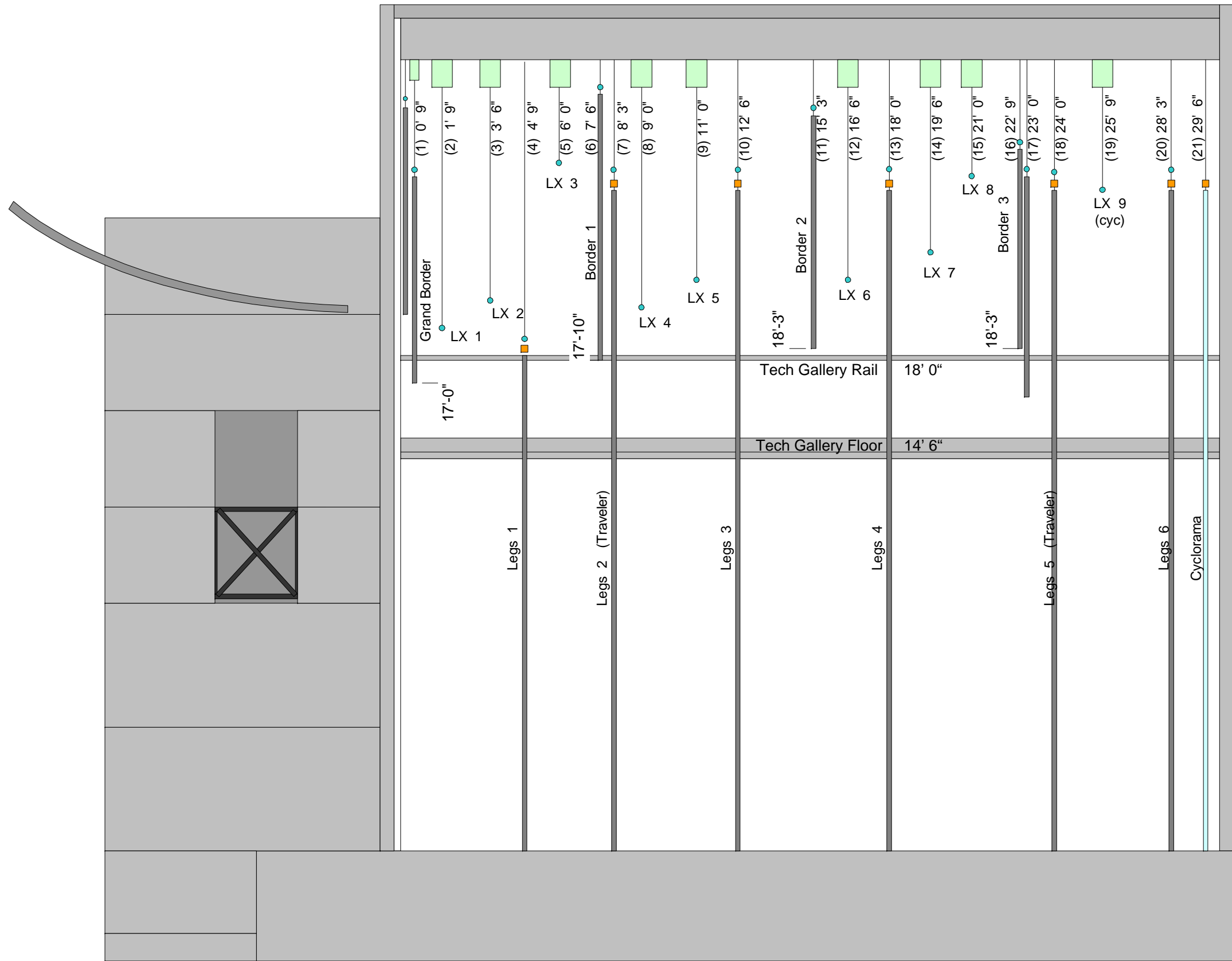
33'-9"

Width of Proscenium Opening

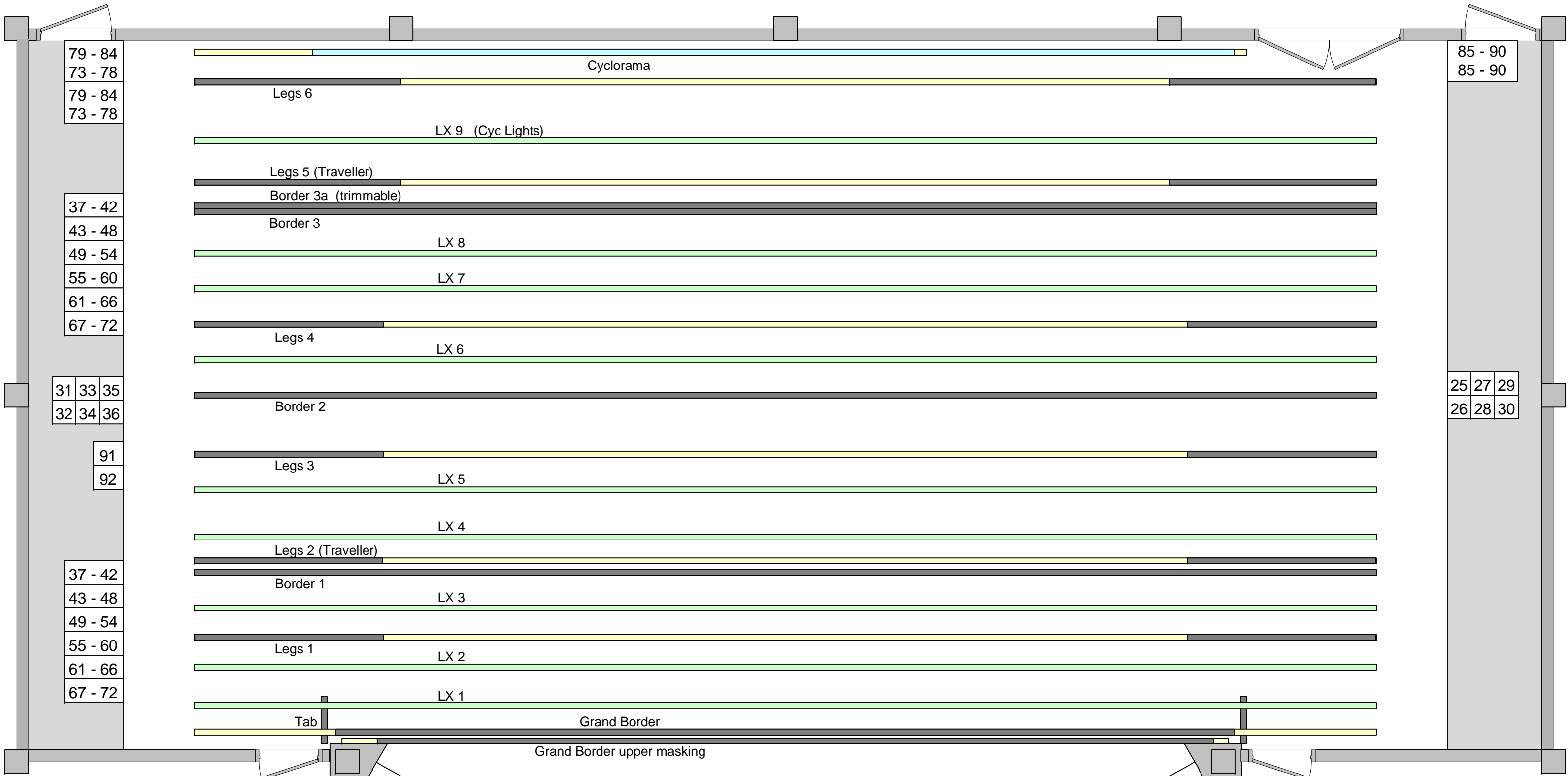
Kanata Theatre	
Ron Maslin Playhouse	
Stage Plan	
REVISED 23 Sep 2008	DRAWN BY P. GARDNER
SCALE 1/4" = 1 FT	PAGE 1 OF 3



Kanata Theatre	
Ron Maslin Playhouse	
Stage Plan - Rigging	
REVISED 23 Sep 2008	DRAWN BY P. GARDNER
SCALE 1/4" = 1 FT	PAGE 2 OF 3



Kanata Theatre	
Ron Maslin Playhouse	
Stage Elevation	
REVISED 23 Sep 2008	DRAWN BY P. GARDNER
SCALE 1/4" = 1 FT	PAGE 3 OF 3



79 - 84
73 - 78
79 - 84
73 - 78

85 - 90
85 - 90

37 - 42
43 - 48
49 - 54
55 - 60
61 - 66
67 - 72

25 27 29
26 28 30

31 33 35
32 34 36

91
92

37 - 42
43 - 48
49 - 54
55 - 60
61 - 66
67 - 72

In Tech Gallery FOH

31 33 35
32 34 36

Connection Types

Socapex (6 circuit)	25 - 30	Twist Lock (20A 120V)						
		<table border="1" style="display: inline-table; border-collapse: collapse;"> <tr><td>31</td><td>33</td><td>35</td></tr> <tr><td>32</td><td>34</td><td>36</td></tr> </table>	31	33	35	32	34	36
31	33	35						
32	34	36						

Kanata Theatre
Ron Maslin Playhouse
Stage Lighting Plan

REVISED 23 Sep 2008	DRAWN BY P. GARDNER
SCALE 1/4" = 1 FT	PAGE 1 OF 2

25 27 29
26 28 30 In Tech Gallery FOH

STAGE

31	33	35
32	34	36

25	27	29
26	28	30

19	20
21	22
23	24

13	14
15	16
17	18

91	<i>WORK LIGHTS</i>
92	<i>DMX POWER</i>

7	8
9	10
11	12

1	2
3	4
5	6

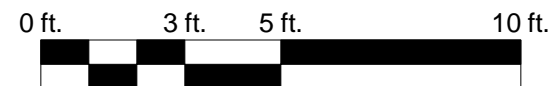
**LIGHTING BRIDGE
(FOH CATWALK)**

HOUSE LIGHTS	
93	<i>ENTRY HALLS</i>
94	<i>SCONCES</i>
95	<i>OVERHEAD</i>

13	14
15	16
17	18

7	8
9	10
11	12

CONTROL BOOTH



NOTE : Distance from stage to bridge and booth is not to scale.

Kanata Theatre	
Ron Maslin Playhouse	
Front of House Lighting Plan	
REVISED 10 Nov 2007	DRAWN BY P. GARDNER
SCALE 1/4" = 1 FT	PAGE 2 OF 2